

# Your St Giles

**Summer 2024**

News and updates  
from your local hospice

**“Sean was  
one in a million,  
I miss him  
more and more  
each day”**

Read more of  
Annette and Sean's  
story on **pages 3-5**

Annette with her  
late husband, Sean.

**We're here for you.** Our advice and support line is available 24/7 - **0300 330 9410**

Inside this issue

**Welcome to Your St Giles**

Introduction	2	We're here for you	12
Annette and Sean's story	3	Legacy giving	13
Your support matters	6	Helpline	14
March of the Elephants	8	Get involved	15
Volunteering	10		
Our Shops	11		

# Hello, I'm Kristy



**Kristy Clayton,**  
Director of Clinical Services

This year I had the pleasure of joining St Giles Hospice as Director of Clinical Services.

I'm privileged to be leading a committed, skilled and hard-working team, supported by our dedicated volunteers, to provide outstanding care and support for local people, and their loved ones.

As well as providing the very best care for our patients, we're also committed to helping their loved ones have precious final moments together.

**To all of our generous donors, fundraisers, shop customers, supporters and healthcare partners, thank you for your continued support.**

**We are seeing increased numbers of people in need of palliative care, with the costs of providing hospice services going up and the challenging financial climate we all find ourselves in, the support of our local community is absolutely vital to be able to continue to provide our specialist care.**

It costs close to £10 million a year to provide our specialist care services and up to 25% of this is funded by the Government. We recognise the contribution of our supporters in ensuring that St Giles can continue to be here for local people, and their loved ones, when they need us most.

Do take the opportunity to look at our calendar of events on page 15 and put some dates in your diary - we have many fantastic ways you can support us this year!

I hope you enjoy our summer edition of Your St Giles.

Best wishes,

*Kristy Clayton*

Director of Clinical Services

**Annette and Sean's story**

# Sean's final wish

**Sean and Annette**  
before Sean's diagnosis



When Sean Carter was being cared for at St Giles Hospice, his final request was to get married to partner Annette, after 18 wonderful years together. With the help of the team at St Giles, Sean's wish came true and he married the love of his life just days before they said their final goodbyes to each other.

**Sean and Annette**  
getting married at St Giles



Annette said: "Sean was diagnosed with lung cancer in 2022 and deteriorated quickly. He was at St Giles for two respite stays on the Inpatient Unit prior to his final stay in June 2023."



**Sean** on his wedding day

### Annette and Sean's story

# “St Giles offered us support when we needed it most”

Sean and Annette had planned to get married in their garden once Sean was discharged from one of his respite stays at St Giles. However on his return home Sean deteriorated and was quickly re-admitted to St Giles. That night Sean expressed his wish to get married.

When the St Giles team heard that Sean wanted to marry his true love, Annette, they got planning and managed to arrange a ceremony in the hospice garden, just outside Sean's room.

**“Sean and I had always thought we'd missed the boat when it came to marriage, after we'd been together for so long. We were so grateful for everyone who helped make our dream come true.”**

Annette said: *“The hospice and the local community rallied together to ensure we had the most perfect day. St Giles donated a wedding dress and accessories from one of its charity shops, local photographer and videographer, captured the event free of charge. Most importantly, the clinical team ensured Sean was comfortable and pain free on our special day.”*

**The couple exchanged their vows on a beautiful sunny day, surrounded by a small group of family and close friends. Annette held a bouquet of white roses, and the garden was filled with beautiful floral displays handcrafted by the hospice gardeners.**

Reflecting on the day, Annette shared: *“It was such a special day for us, one that I will never forget.”*

*“Sean was one in a million and I miss him more and more each day – he was so special to everyone.”*

*“All the team at St Giles did Sean proud – they couldn't have done enough for him and us as a family. St Giles offered us support when we needed them most. The hospice was a lovely place to be – it always felt like a home from home for all of us.”*

*“Please consider supporting St Giles Hospice so they can help families like mine have more precious final moments together.”*





Throughout 2023/2024

# You've been here for us...



Lottery players bought over

**1.2m**  
tickets



Community fundraising events raised

**£337k**



Event participants raised

**£240k**



Our super shoppers raised over

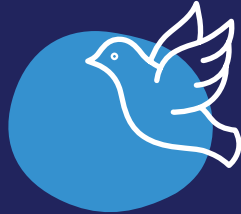
**£500k**



Over

**£162k**

raised in Gift Aid

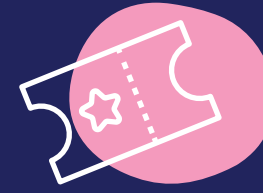


**£1.2m**

on average is donated through gifts in wills every year



Over **700** people volunteered their time – which is just priceless



Our raffle players raised over

**£177k**



You've donated

**£656k**

to St Giles Hospice

# ...so we can be there for you.



We've provided inpatient care for over

**343**

patients



We've supported

**1,642**

patients in their own homes



We've been here to support bereaved families and to answer over

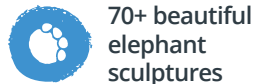
**14,455**

calls to our 24/7 advice and referral line



# The herd is coming...

## March of the Elephants is coming to Lichfield, Tamworth and Sutton Coldfield!



From 1st July to 8th September, the streets, parks and open spaces of Lichfield, Tamworth and Sutton Coldfield will be home to over 60 beautifully designed elephant sculptures. 30 large elephant sculptures have been designed by local and national artists – both well-known favourites and newly emerging talent.

Plus, you'll also be able to admire more than 40 mini members of the herd, designed by local schools and community groups.

To find out more visit [www.marchoftheelephants.co.uk](http://www.marchoftheelephants.co.uk)

## Win your very own mini elephant - in our trunk-tastic raffle!

Enter online:  
25th July - 25th September

Follow [@\\_ElephantMarch](https://twitter.com/_ElephantMarch) for updates



# Memory Elephant Summer 2024

## Remember someone special by adding their name to our Memory Elephant

They say an elephant never forgets and at St Giles we understand the importance of making lasting memories. Remember someone special this summer with our Memory Elephant.

To make a dedication visit:  
[www.stgileshospice.com/memoryelephant](http://www.stgileshospice.com/memoryelephant)



#MarchoftheElephants



# Volunteering at St Giles

**“Volunteering at St Giles has made me realise that I have got something to give, it fills me with self-worth. I can think of nothing more satisfying than helping people.”**

Vicci Pountney has been a Volunteer Receptionist at St Giles since 2021.

*“St Giles supported my mom at the end of her life, it truly is such a worthy charity, and I knew I wanted to give something back. As a breast cancer survivor myself I understand the importance of making family members feel comfortable in what is often a terribly trying time. I love every shift that I do and always come away content that I have hopefully made a difficult journey a little easier for people.”*

*“My two children have both ‘flown the nest’ so now it’s ‘Vicci time.’*

**“Thanks to St Giles I have gained new skills, grown in confidence and met some wonderful people. I’m so grateful to be a part of the St Giles family.”**

If you would like to volunteer for #TeamStGiles yourself, or know someone who would, email [volunteering@stgileshospice.com](mailto:volunteering@stgileshospice.com) or call **01543 766281**



**Vicci Pountney,**  
St Giles  
Volunteer

Volunteers are vital to the work that we do here at St Giles, and we simply couldn't do it without them. Volunteers make up 75% of our workforce, so they truly lie at the heart of #TeamStGiles!

### Feeling inspired by Vicci's story?

We offer a wide range of volunteering opportunities including fundraising and administrative support, working as part of our reception team, in our shops and even supporting patients.

By volunteering you can enjoy an exciting new challenge, meet new people, and do something different with colleagues, friends or family. Whether you give an hour, a day or become a regular volunteer – your time will make a difference to local people, and their loved ones, living with a terminal illness.

## Beyond the bargains

# What's happening in our shops?



Opening of our refurbished **Burntwood store**

Our chain of 22 charity shops is a vital source of income for St Giles Hospice. As part of our three year strategy, which was launched in 2023, we're investing in our shops to help us raise more funds for the patients and loved ones we support.

So far, we've refurbished six of our existing charity shops and recently opened our brand-new shop in Bilston, the first to be opened in five years!

We've also joined the March of the Elephants sculpture trail as a Corporate and Community Sponsor. We can't wait to reveal more about our very own elephant, Brothwell, named after the founder of St Giles Hospice, the Reverend Paul Brothwell!

Find our elephant out on the trail between 1st July – 8th September and receive a 10% off voucher to spend in one of our 22 shops.



Opening our new **Bilston store!**

### Did you know?

Our shops have their very own Instagram account! Keep up to date with what they're up to by following: [@stgileshospiceshops](https://www.instagram.com/stgileshospiceshops)



With lots going on, it's an exciting time to shop with St Giles. Find your local store here: [www.stgileshospice.com/shoplocations](http://www.stgileshospice.com/shoplocations)

# We're here for you



**Through our Bereavement Help Points and the Burton Albion Community Trust we were introduced to the family of the late Brandon Sutton. Eighteen-year-old Brandon tragically died on 1st January 2023 in a road traffic accident.**

Our Bereavement Help Points, set up by our Community Development team, offer a chance to chat over a cup of tea with one of our support volunteers and perhaps meet others in a similar situation. The team work alongside businesses and schools in our local community to provide them with information on coping with both the practical and emotional aspects of losing a loved one.

To keep Brandon's legacy alive, his family - supported by St Giles and the Burton Albion Community Trust - set up the 'Brandon Sutton Legacy Fund' to help youngsters dealing with grief.

Some of the funds have already been used to deliver a batch of 'Brandon's Boxes' to young people, who were grieving the death of a friend. These boxes provide a comfort pack for young people facing bereavement and are a really special resource; empowering our communities to support each other

You can find out more about our Bereavement Help Points by visiting [www.stgileshospice.com/bereavement-support](http://www.stgileshospice.com/bereavement-support)

**Please consider supporting St Giles Hospice to help more families like Brandon's.**

during the most vulnerable times of their lives.

Brandon's parents said: *"After Brandon's death we discovered the range of services on offer at St Giles, they provided us with specialist bereavement support, which truly helped bring comfort to our family."*

*"We knew somehow that something positive had to come from Brandon's death. Our ambition is that young people are properly supported to help cope with loss and grief at a time when they often just don't know what they should do or feel. Despite very difficult circumstances, seeing Brandon's legacy helping other young people is something that we hope will continue."*

Kristy Clayton, Director of Clinical Services at St Giles, said: *"As a hospice, we are proud of the Brandon's Boxes initiative and hope patients, and their loved ones, will benefit from them in the future."*

# Create a lasting impact



**Leaving a gift in your will is a poignant way to remember someone special whilst also helping to fund care for local people, and their loved ones, living with a terminal illness.**

One in six of our patients are cared for through donations we receive from gifts left in wills. We're incredibly grateful to everyone who supports St Giles with a legacy, helping our hospice to be here for years to come.

We understand that looking after your family and loved ones comes first, and considering including St Giles Hospice in your will is an important decision. All gifts – small or large – are hugely appreciated and make a big difference.

Learn more at [www.stgileshospice.com/legacy](http://www.stgileshospice.com/legacy)

**It takes a community to make a hospice, thank you for your support.**

A gift of just 1%, or a fixed amount, will have an incredible impact on our patients and their loved ones, ensuring that our services are available not just now, but for generations to come.

To find out more about leaving a gift in your will, please contact us on **01543 434513** or email [legacy@stgileshospice.com](mailto:legacy@stgileshospice.com)



# Hospice Helpline



In January 2024, alongside the Staffordshire and Stoke-on-Trent Integrated Care Board (ICB), Douglas Macmillan Hospice, Katharine House Hospice, and Compton Care we launched a new phone line offering access to an increased number of specialist clinicians.

*Patients requiring palliative or end of life advice often need support at any time of the day or night, this partnership and the new phone line will make it easier for patients, relatives, and health care professionals to access palliative and end of life care advice across Staffordshire and Stoke-on-Trent."*

**"It really is a great example of these wonderful services working collaboratively alongside the ICB to provide the very best care to patients when they need it most."**

The new dedicated telephone line  
**0300 561 2900**

is available 24/7, to provide advice, support and information to patients, relatives and healthcare professionals regarding palliative and end of life care.

Our St Giles Hospice Advice and Support Line (0300 330 9410) is still available alongside the new Hospice Helpline should you need to contact us for advice and support.

To find out more about our care services visit: [www.stgileshospice.com](http://www.stgileshospice.com)

Andrew Harkness, Chief Executive of St Giles said "We are delighted to be working alongside Douglas Macmillan Hospice, Katharine House, Compton Care and Stoke and Staffordshire ICB on the new hospice helpline to support more local people and their loved ones.



# Get involved!

By taking part in one of our events you'll make unforgettable memories, meet new people and best of all, your support will make a real difference to local people, and their loved ones, living with a terminal illness.

Join #TeamStGiles and fundraise your way. Keep up to date with all of our events by visiting [www.stgileshospice.com/events](http://www.stgileshospice.com/events)

**Keepy-Up Challenge**  
14th June – 14th July



Complete as many keepy-ups as you can!

**March of the Elephants**  
1st July - 8th September



An ele-fantastic art trail!

**Summer Raffle draw**  
Wednesday 7th August



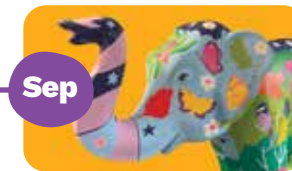
The chance to win prizes worth over £11,000!

**Cycle Autumn**  
Sunday 8th September



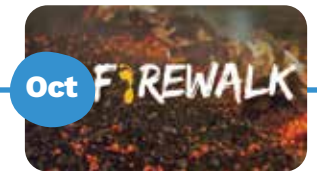
Support us from your saddle!

**Farewell Weekend**  
20th - 22nd September



Say goodbye to the elephants in Beacon park.

**Firewalk**  
Saturday 26th October



Brave a barefoot walk over fiery embers!

**Light up a Life**  
November/December



Remember your loved ones at Christmas.

**Rudolph Run**  
November/December



Walk, run or gallop your own Rudolph Run.

**Jolly Jumper Day**  
Thursday 12th December



Do your bit in a festive knit!

# We're here for you...

Whether you're living with a terminal illness, caring for someone who is, or grieving the death of a loved one, we're here for you. Our St Giles Hospice advice and support line is available 24/7 on **0300 330 9410**.



**Leon Ratcliffe,**  
Deputy Director of  
Clinical Services

## ...because you're here for us

It costs close to £10 million a year to provide our specialist care services and, with up to 25% of this funded by the Government, we rely heavily on donations and income generation from the local community.

With rising costs and a funding crisis looming over the hospice sector, we can only continue our vitally important care with the help of our kind-hearted supporters.

If you can, please consider making a donation today. Your support will help us continue to be there for our patients, and their loved ones, living with a terminal illness.

**It takes a community to make a hospice. Thank you so much for your support.**

**There are three easy ways to support...**



**Donate online:**  
[www.stgileshospice.com/yourstgiles](http://www.stgileshospice.com/yourstgiles)



**Donate by phone:**  
01543 432538



**Donate by post:**  
(please do not send cash in the post)  
Your St Giles, St Giles Hospice,  
Fisherwick Road, Whittington,  
Lichfield WS14 9LH